



CALEDONIAN SPECIALIST IN HYGIENE PRODUCTS  
COMPANY CREATED IN 1980  
MAJOR LOCAL INDUSTRIALIST IN ITS TERRITORY

SAVOYE'S USER SINCE 2020



**Manufacturer and distributor of more than 2,000 references**

*“ MAGISTOR distinguished itself by two important points: a sizing that matches our needs and Savoye’s ability to go beyond the standard ”*

**Warehouse of 6,000 m2**

**Sébastien BONNARDEL,**  
Logistics manager at Vega

## TARGETS

### WHY SAVOYE ?

- A sizing that matches Vega’s needs
- Savoye’s ability to go beyond the standard and to support its customers if necessary with specific upgrades
- Strong availability of the team

### DEPLOYED SOLUTION

- MAGISTOR WMS



**TO ABSORB THE INCREASE IN VOLUMES OF OPERATIONS**



**TO INSURE BATCH NUMBER TRACEABILITY**



**TO MANAGE HAZARDOUS AND FLAMMABLE PRODUCTS**

## RESULTS



**OPTIMIZATION OF ITS LOGISTIC PROCESSES**



**MONITORING AND CONTROL OF PRODUCTS SUBJECT TO REGULATION**



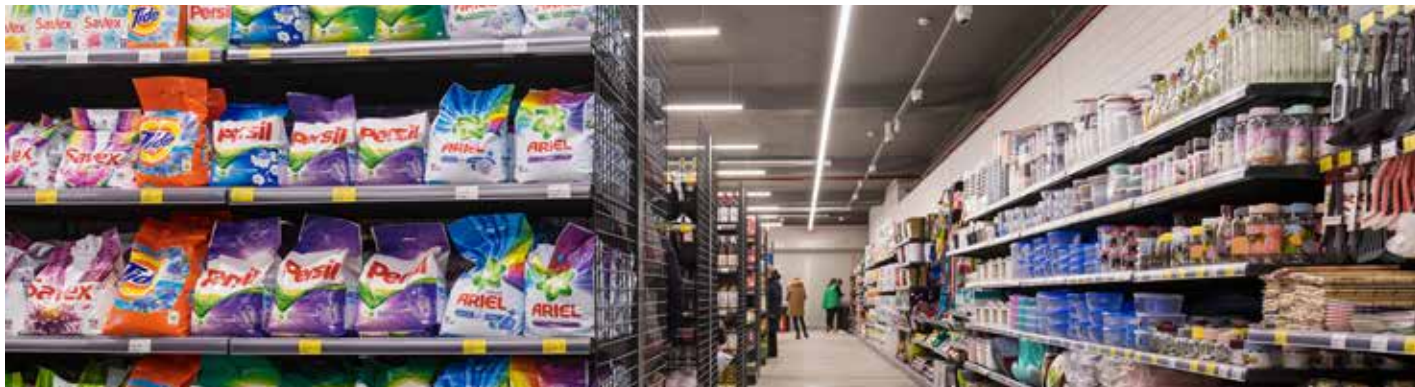
**BETTER ANALYSIS OF PERFORMANCE AND PRODUCTIVITY**





Un monde de propreté

In order to serve these island logistics, Vega embarked on a vast logistics modernization project and began the construction of a new dedicated site at the end of 2020. In order to continue its mission and absorb the increase in volumes of operations, Vega wanted to launch a WMS project.



**SPECIALIST IN HYGIENE PRODUCTS, VEGA STANDS OUT AS A MAJOR LOCAL INDUSTRIALIST IN NEW CALEDONIA. IN ORDER TO CONTINUE ITS MISSION AND ABSORB THE INCREASE IN VOLUMES OF OPERATIONS, VEGA IMPLEMENTS THE MAGISTOR WMS.**

After an initial contact and a site visit in 2017, Vega chose Savoye, the specialist in supply chain execution, and equipped itself with the latest version of the MAGISTOR WMS, along with the LM Connect solution. «MAGISTOR distinguished itself by two important points: a sizing that matches our needs and Savoye’s ability to go beyond the standard and to support us if necessary with specific upgrades to complete and cover our functional perimeter», explains Sébastien Bonnardel logistics manager at Vega

The functional analysis starts in 2020 for a start-up and a stock increase on December 15 of the same year. Despite the disruptions caused by the health crisis from March, the project continues remotely and successfully. «Process drafting, mapping... We were able to rely on Savoye’s strong availability. Our respective teams have built up a relationship of trust. Finally the project was able to remain fluid despite Covid, distance and time zone differences. Start-up went as expected: in a controlled manner and without repercussions for customers. Our partnership worked thanks to the adaptation and professionalism of all», he continues.

By implementing radio frequency technology and eliminating paper, the WMS tool has also allowed Vega to obtain data to optimize its processes, to facilitate the monitoring and control of products subject to regulation and to better analyze its performance and productivity while solving problems related to non-quality. In the future, with these developments, Vega intends to go further in the control of deliveries, share its indicators with other departments in order to continue the optimization of its processes and to grow through its new warehouse management tool: «Currently, after 3 months of operation, we are still assessing the wide potential for future improvements», concludes Sébastien Bonnardel.

contact@savoye.com  
Tel. +33 (0)3 80 54 40 00  
[www.savoye.com](http://www.savoye.com)

