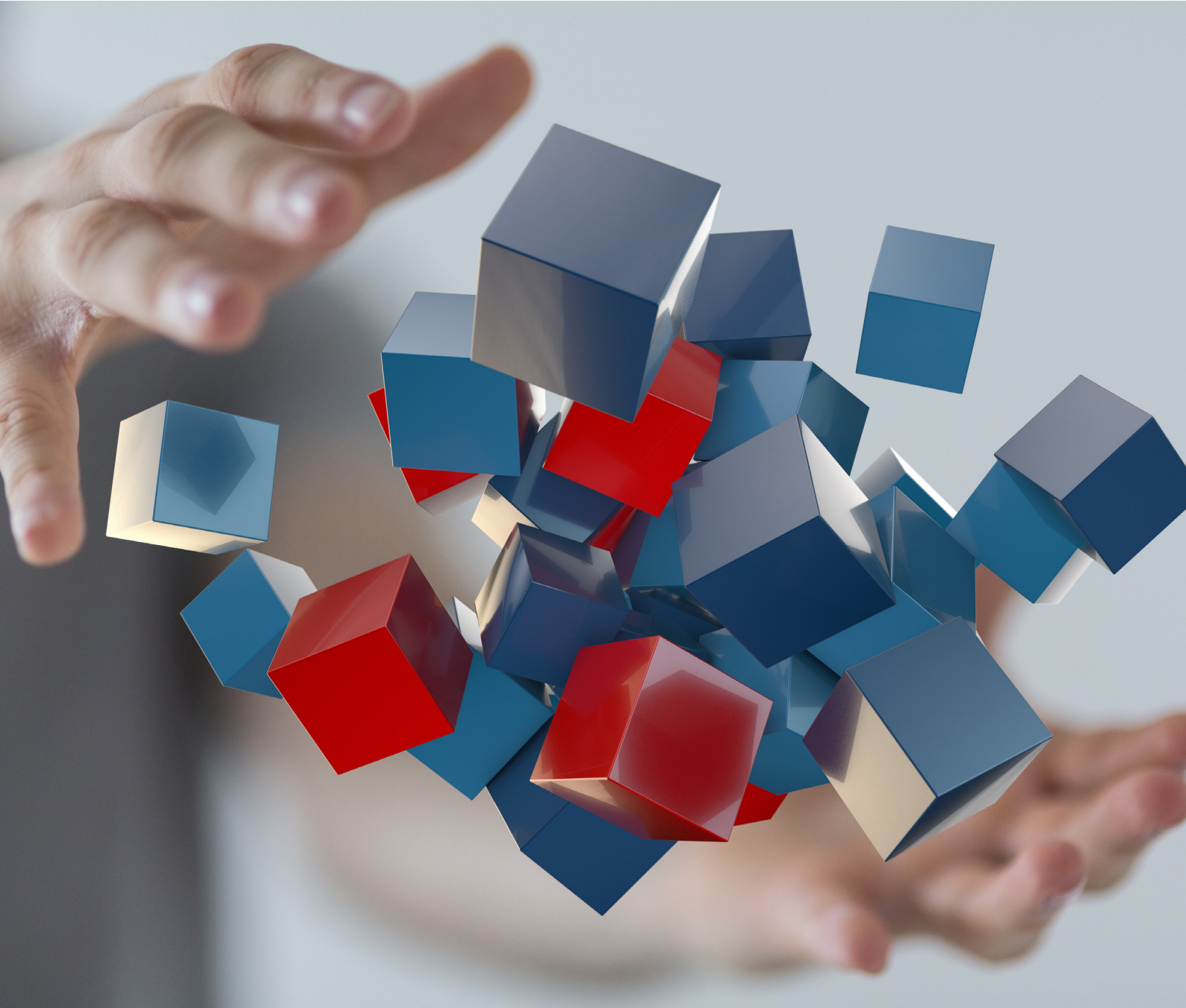


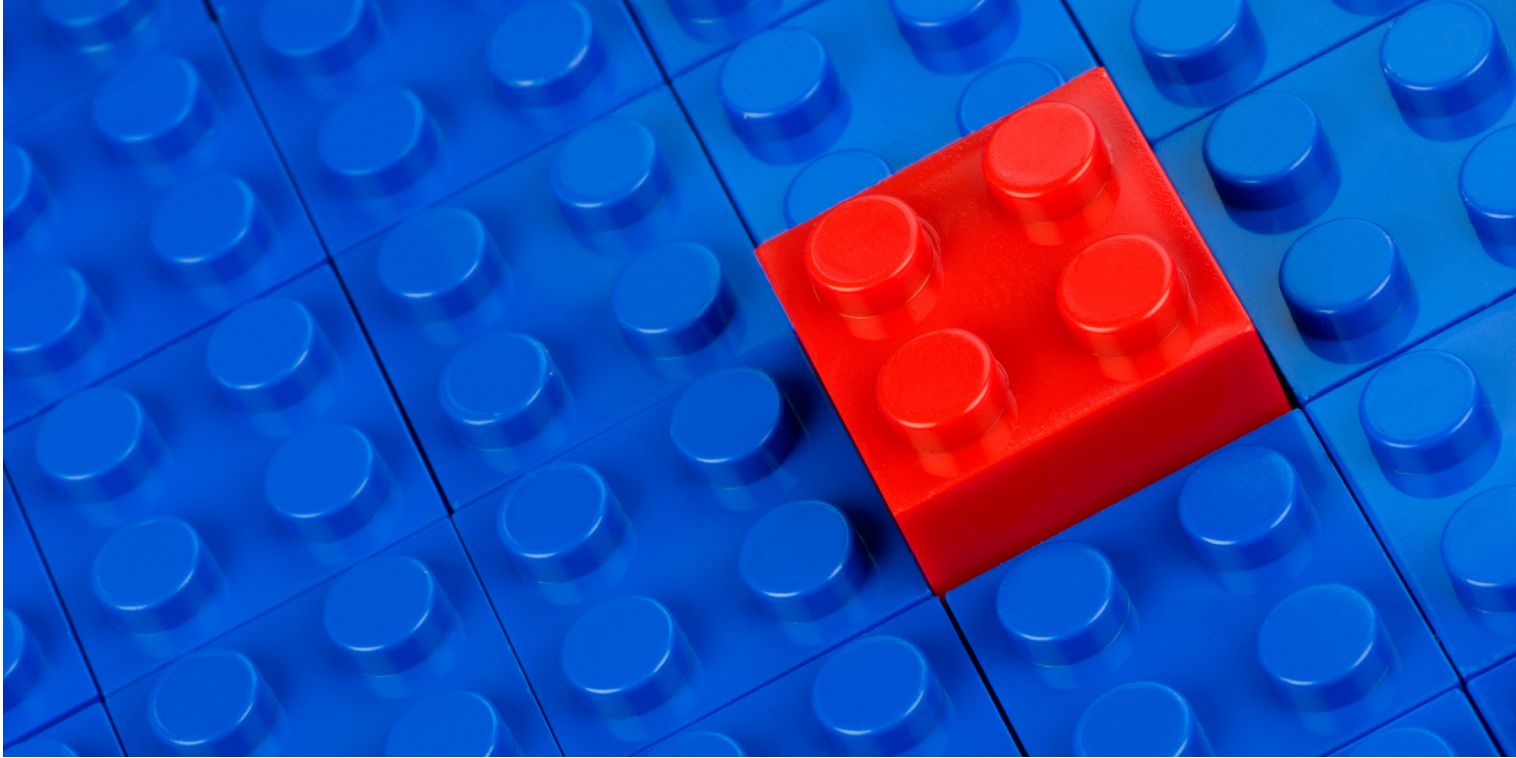
# MODULARITY

IS THE KEY TO GROWTH AND PERFORMANCE



# MODULARITY

IS THE KEY TO GROWTH AND PERFORMANCE



---

## INTRODUCTION

**In a world where responsiveness is crucial for companies to be competitive and where decisions must be made quickly to guarantee promises made to customers, we note that the supply chain is being digitized from end to end.** Logistics organizations are using WMS or TMS type tools, which each meet precise functional requirements for specific zones and processes (the warehouse, transport, orchestration of orders, etc.). The

level of maturity of companies' WMS and TMS equipment reflects their desire to optimize order picking and to monitor shipments until they reach the end customer.

# MODULARITY

## IS THE KEY TO GROWTH AND PERFORMANCE



**This digitization of the supply chain brings new opportunities but also new demands from decision makers, who are looking for:**

- Increased synchronization and dialog when it comes to decision making
- More functions without having multiple software tools
- Easier administration of software tools
- Relevant KPIs that are easy to access and centralized

**This has led Savoye to build ODATiO in a modular manner, integrating a WMS and a TMS in the same application. Offering a more comprehensive oversight of activities and wider access to functions, ODATiO puts an end to information silos and optimizes the management and control of the company's supply chain processes.**

### What are the benefits of a modular solution?

#### Greater flexibility and scalability

**The main problem with non-modular solutions is they limit the functions available to users to the limited scope of their application.**

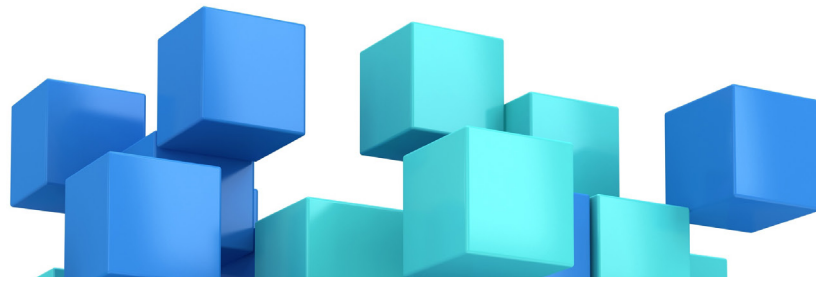
In this case, once a new requirement surfaces, due to a desire to optimize certain processes or even due to the company's growth, you have to contact a new supplier, roll out a new application and add extra modules. This type of project, in addition to increasing your number of tools, forces you to develop interfaces between the different systems.

Faced with these constraints, the modular solution is the best option for companies thinking about the future and who want to widen their scope for development. Above all, a modular WMS/TMS solution is a solution that can adapt to your situation, offering you a package of functions that you make up as needed. This scalable application is all the more relevant as it can offer you long-term support, depending on the growth of your business, new products, new customers or new business models.



## MODULARITY

### IS THE KEY TO GROWTH AND PERFORMANCE



**Greater oversight of your activity for greater responsiveness**



**At a time when data analysis is crucial for optimization, using several different tools may make it difficult to monitor all your activity.**

Indeed, to have comprehensive oversight, you need to connect to different software tools or different reporting tools. This leads to the often manual task of pasting data together to get a comprehensive summary of your on-going activity. This difficulty in obtaining a comprehensive and single oversight of your company's activities is problematic at a time when data is the key to companies' improvement strategies.

A modular software program like ODATiO combines all data from the warehouse and transport activities in the same application. The information can therefore be cross-referenced via a single reporting tool. In this vein, ODATiO offers a fully configurable cockpit, enabling you to visualize all information to analyze and act, on a single screen. Made up of widgets and KPIs that are relevant to your activity, this cockpit gives you all the tools for quick and collaborative decision making.

Fully configurable by the user to their area of expertise, it offers you real-time analysis of critical points enabling you to anticipate risks and take action for even higher quality service.

### **Simplified administration**

**Multiple administration tools mean more training for users, more rights management and configuration to deal with.**



With a single, modular solution, you can access your application through a single interface, whereas you previously had to connect to different software programs for each function. In addition to centralized access, the implementation, hosting, rights management and configuration are also simplified. Finally, user handling and training are made easier through a single ergonomic design for all supply chain functions.





**SAVOYE:**

**BEST IN CLASS AUTOMATION**

**FOR YOUR LOGISTICS**

**AND SUPPLY CHAIN NEEDS**

### *ADVANCED TECHNOLOGIES*

#### **Order preparation of light loads**

X-PTS Goods-to-Person solution, smart conveyors, high-speed sorting systems, robotics

#### **Automation of shipping packaging**

JIVARO, e-JIVARO, PAC 600, lidding, cardboard wedging

#### **Automated storage of heavy loads**

MAGMATIC

### *ADVANCED SOFTWARE*

#### **Warehouse management and flows control**

OMS, WMS, WCS, TMS, EDI



### **KEY MARKETS - SPECIFIC EXPERTISE**

SAVOYE operates in key business sectors and has specific expertise in each area.

The SAVOYE service offer is built on high-level “professionspecific” expertise. We provide tailor-made solutions for every type of logistics warehouse, from the simplest to the most complex layouts.

**Retail logistics:** 3PLs, specialist distribution

**Multi-channel logistics:** retail, e-commerce, mail-order

**Industrial logistics:** food, health and pharmaceutical industry, industrial supplies